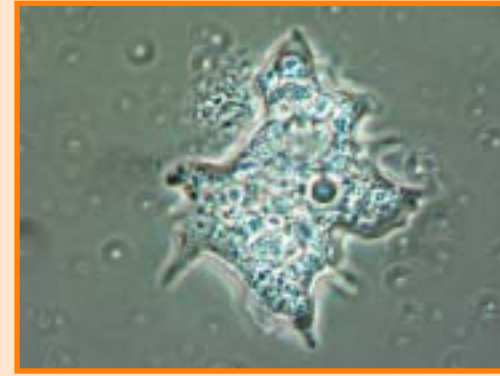


# PROTISTAS Y METAZOOS PRESENTES EN FANGOS ACTIVOS

AUTORES: L. Isac, E. Rodríguez, N. Fernández, M.D. Salas (Grupo Bioindicación Sevilla); A. Zornoza (AVSA-EGEVASA); S. Serrano, B. Perez-Uz y L. Arregui (Universidad Complutense de Madrid), P. Madoni (Università di Parma) y E. Mitchell (Swiss Federal Research Institute WSL).

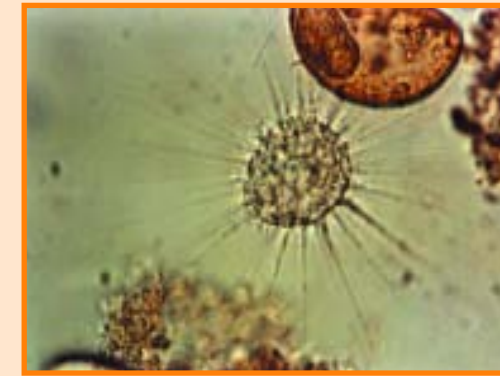
## PROTISTAS AMEBOIDES

### AMEBAS DESNUDAS

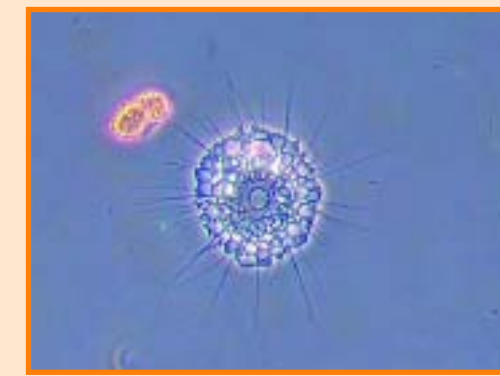


Amoeba desnuda, 1000x.

### HELIOZOOS



Actinophrys sp., 400x.

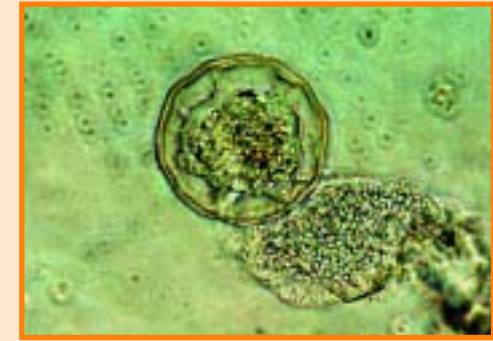


Actinosphaerium sp., 200x.

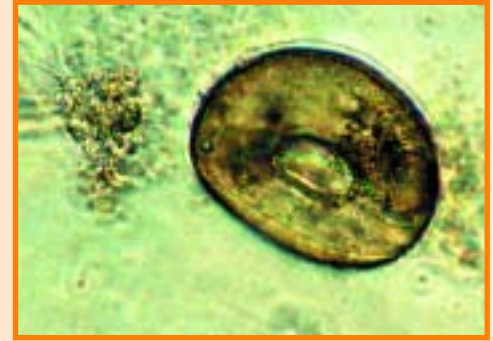
### AMEBAS TESTÁCEAS



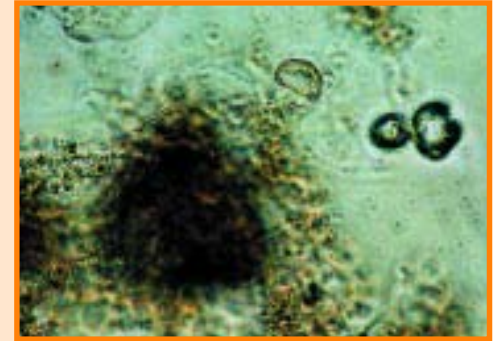
Arcella arenaria, 275x.



Arcella gibbosa, 400x.



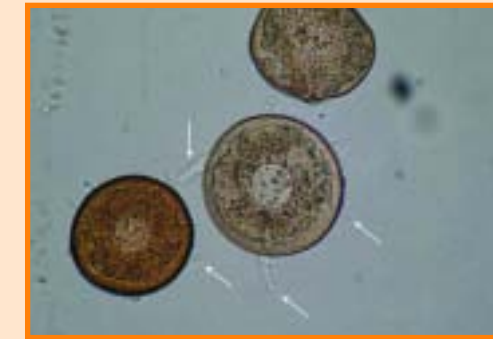
Arcella vulgaris, 400x.



Pyxidula sp., 400x.



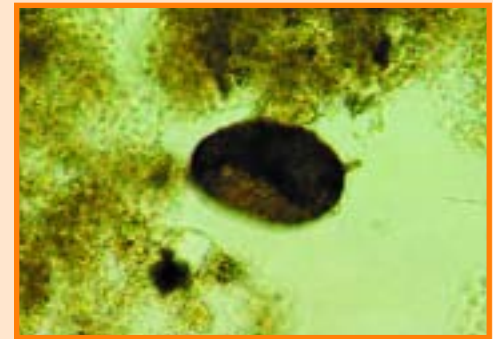
Arcella discoides en vista anterior y lateral, 440x.



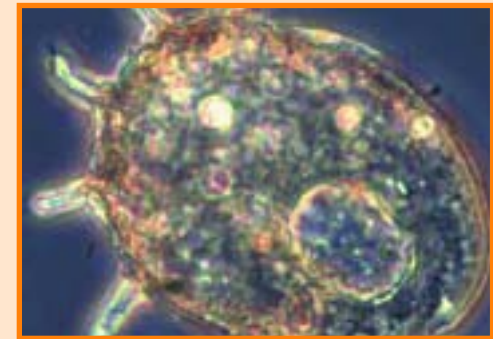
Arcella discoides var. scutelliformis, 400x.



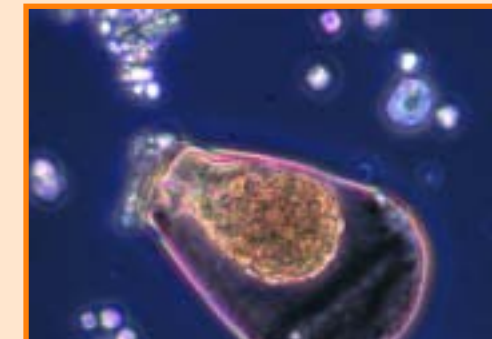
Diffugia bacillifera, 275x.



Centropyxis sp., 200x.

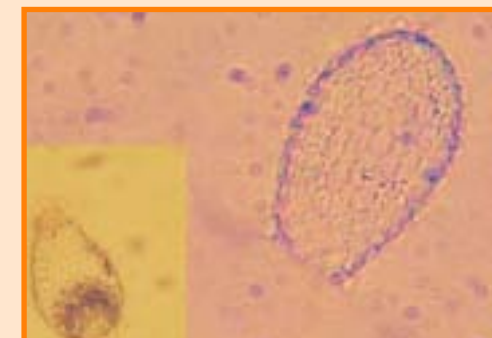


Centropyxis aculeata, 400x.



Hyalosphenia papilio e H. elegans, 400x.

### Con filópodos



Euplypha sp., 400x. Detalle de individuo enquistado en interior de testa.



Euplypha penardi. Barra calibrada 50 µm.



Trinema sp., 693x.

## PROTISTAS FLAGELADOS

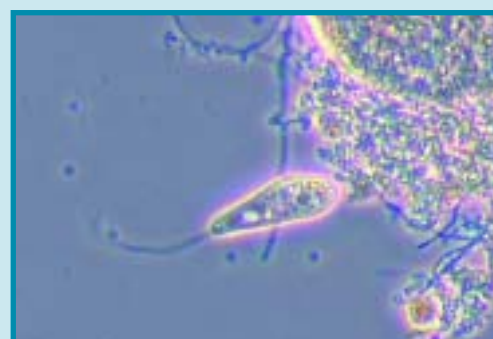
### EUGLÉNIDOS



Entosiphon sp., 400x. Detalle sifón, 1000x.

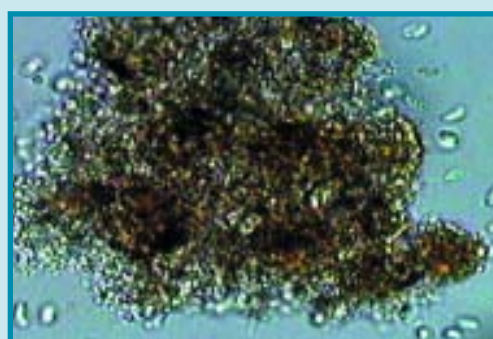


Euglena sp., 400x.



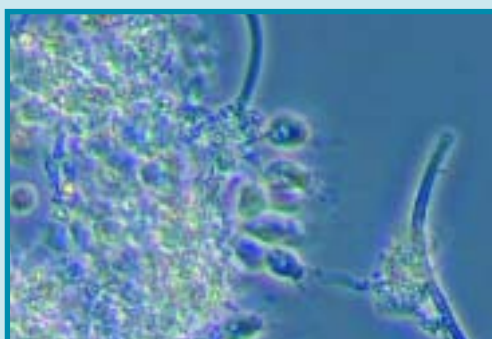
Peranema sp., 400x.

### BODÓNIDOS



Bodónidos, 400x.

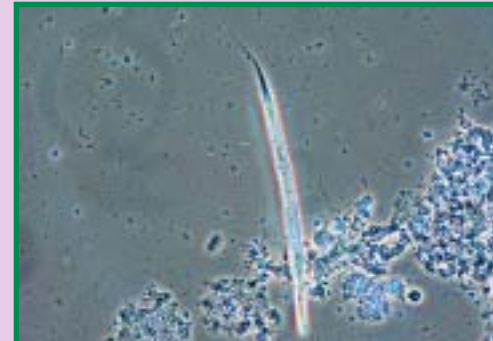
### COANOFLAGELADOS



Coanoflagelados, 1000x.

## METAZOOS

### NEMATODOS

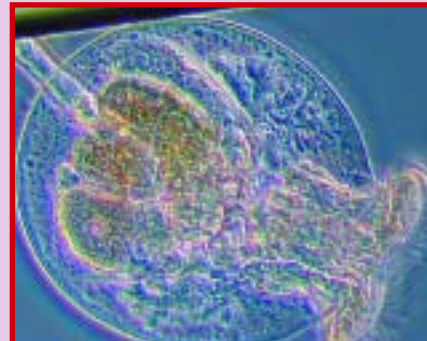


Nematodo, 100x.

### ROTÍFEROS



Rotaria sp., 100x.



Testudinella sp., 100x.

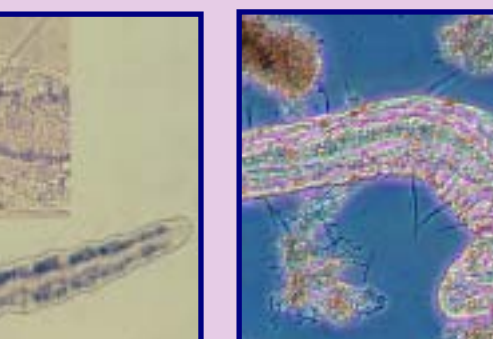


Lecane sp., 100x.

### OLIGOQUETOS



Aelosoma sp., 100x. Detalle 400x.



Aelosoma variegatum, 100x.

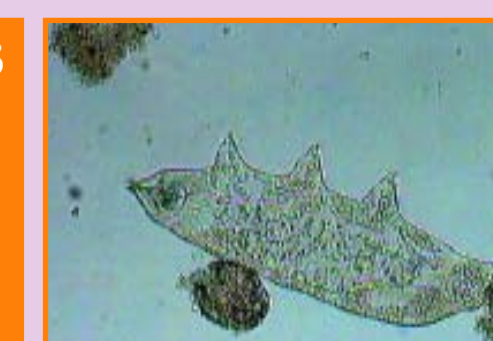


### GASTROTRICOS



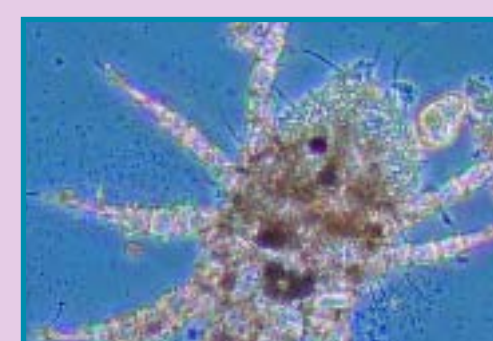
Gastrotrico, 100x.

### TARDÍGRADOS



Tardigrado, 100x.

### ARTRÓPODOS



Ácaro, 100x.



Copépodo, 100x.

## PROTISTAS CILIADOS

### CILIADOS ASOCIADOS AL FLÓCULO

#### • SÉSILES OLIGOHIMENÓFOROS PERITRICOS



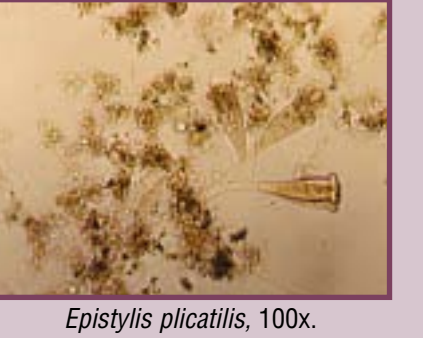
Campanella umbellaria, 100x.



Carchesium polypinum, 100x.



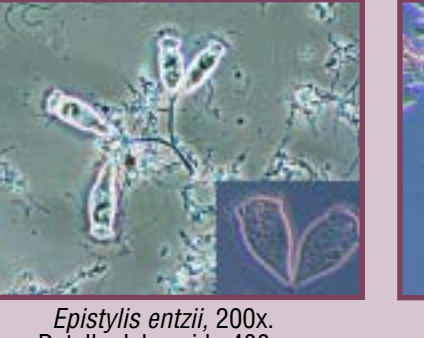
Epistylis epibioticum, 400x.



Epistylis plicatilis, 100x.



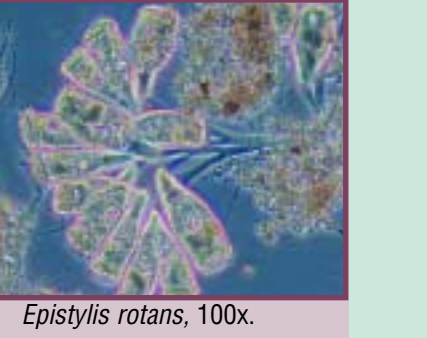
Epistylis coronata, 400x.



Epistylis entzii, 200x. Detalle del zooid 400x.



Epistylis chrysemidis, 200x.



Epistylis rotans, 100x.



Opercularia minima, 100x.



Opercularia articulata, 400x.



Opercularia asymetrica, 400x.



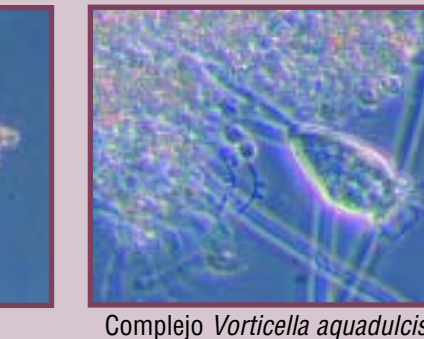
Opercularia coronata, 400x.



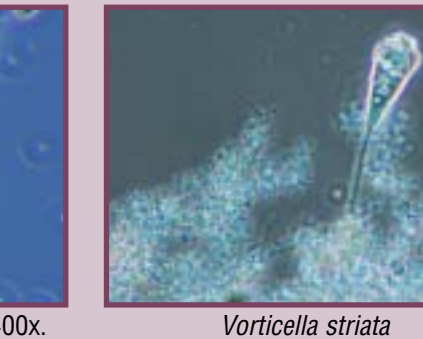
Opercularia microdiscum, 200x.



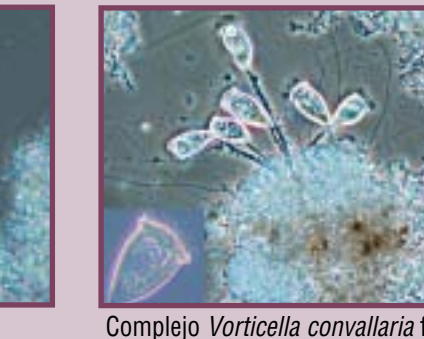
Thuricicola kellecottiana, 100x.



Complejo Vorticella aquadulcis, 400x.



Vorticella striata (Complejo V. aquadulcis), 400x.



Complejo Vorticella convallaria formando pseudocolonia, 100x. Detalle del zooid 400x.



Complejo Vorticella infusionum, 100x. Detalle del zooid 400x.



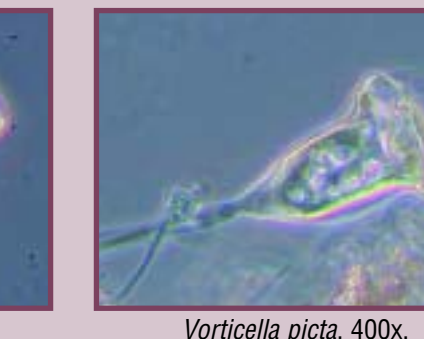
Complejo Vorticella microstoma, 100x.



Vorticella alpestris (Complejo V. microstoma), 400x.



Vorticella campanula, 400x.



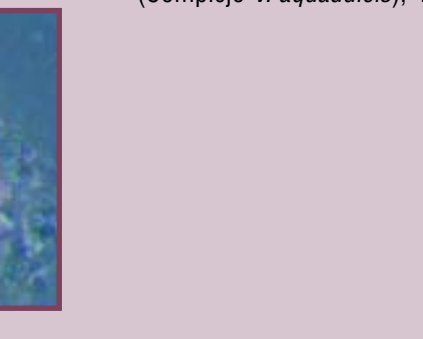
Vorticella picta, 400x.



Vaginicola sp., 400x.

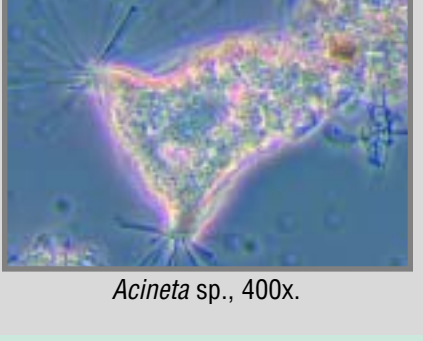


Vorticella fromentalis, 400x.



Zoothamnium sp., 400x.

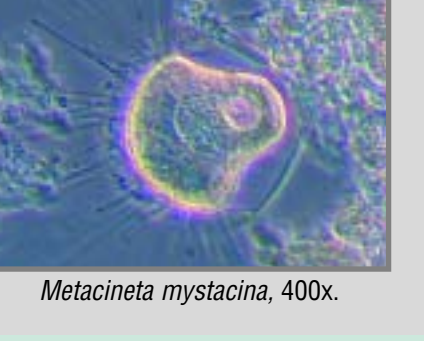
#### • SÉSILES SUCTORES



Acineta sp., 400x.



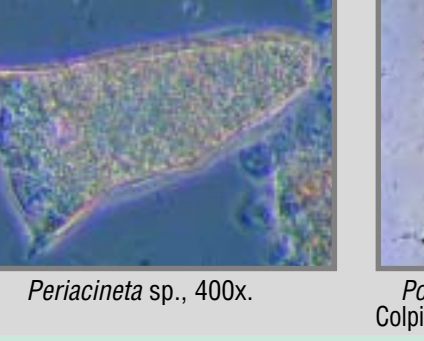
Metacinetia cuspidata, 400x.



Metacinetia mystacina, 400x.



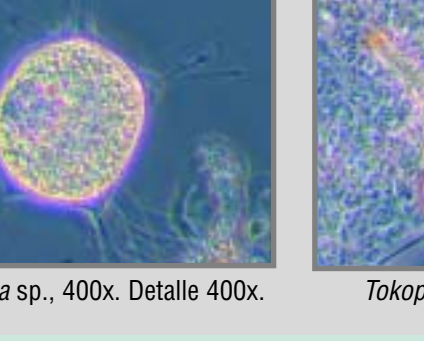
Multifasciculatum sp., 200x.



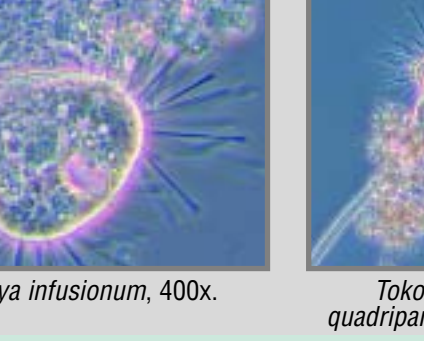
Periacineta sp., 400x.



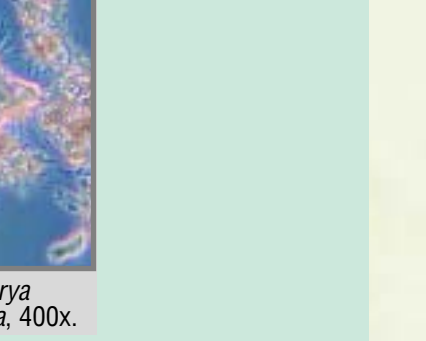
Podophrya sp., 400x. Observa a Colpidium sp. adherido a los tentáculos.



Solenophrya sp., 400x. Detalle 400x.



Tokophrya infusionum, 400x.



Tokophrya quadripartita, 400x.

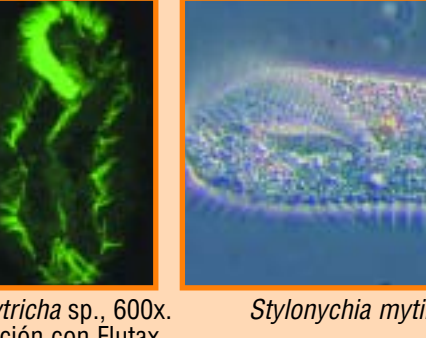
#### • REPTANTES ESTICOTRICOS



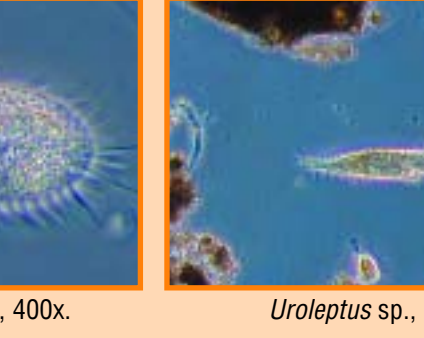
Holosticha sp., 400x.



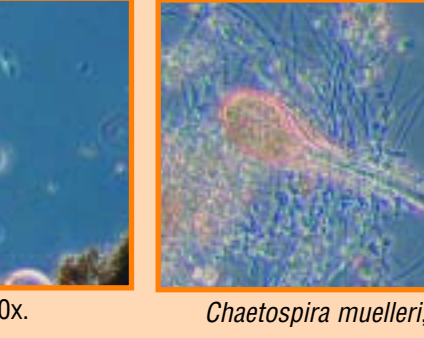
Oxytricha sp., 400x.



Oxytricha sp., 600x. Tinción con Ftúx.



Stylyonchia mytilus, 400x.



Uroleptus sp., 100x.



Chaetospira muelleri, 200x.

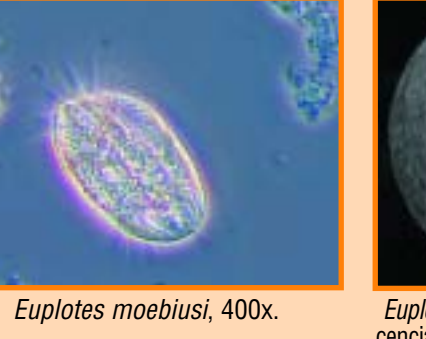
#### • REPTANTES HIPOTRICOS



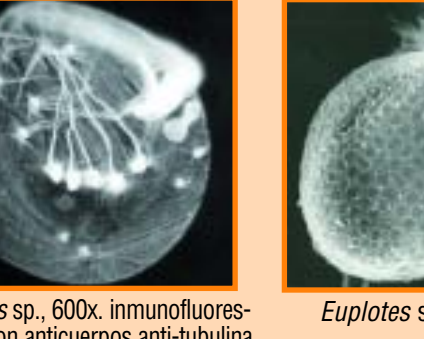
Euplotes aediculatus, 400x. Detalles tinción Fdez-Galiano.



Euplotes patella, 400x.



Euplotes moebiusi, 400x.



Euplotes sp., 600x. inmunofluorescencia con anticuerpos anti-tubulina.



Euplotes sp. SEM.



Euplotes affinis, 400x.



Aspidisca cicada, 400x. Detalle tinción Fdez-Galiano y SEM.



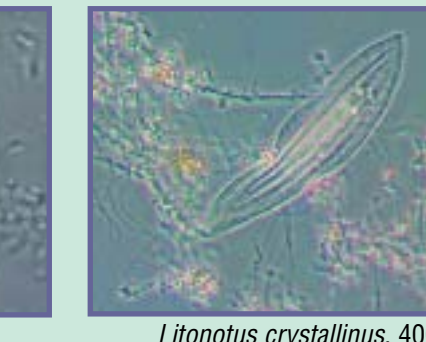
Aspidisca lynceus, 400x.

### CILIADOS NADADORES ASOCIADOS TEMPORALMENTE AL FLOCULO

#### • LITOSTOMADOS



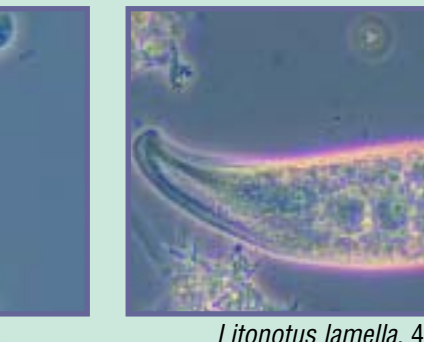
Acineta uncinata, 200x.



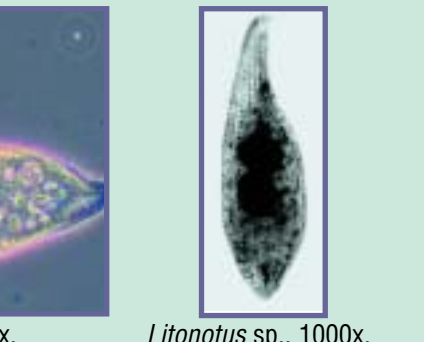
Litonotus crystallinus, 400x.



Litonotus cygnus, 400x.



Litonotus lamella, 400x.



Litonotus sp., 1000x. Tinción Fdez-Galiano.

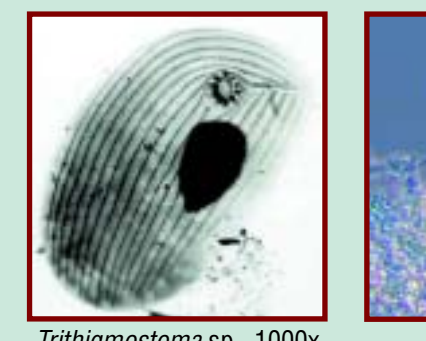


Perispira sp., 400x.

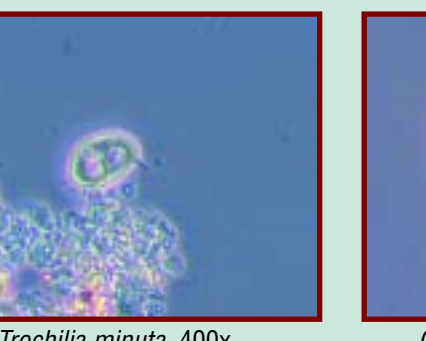
#### • FILOFARINGEOS



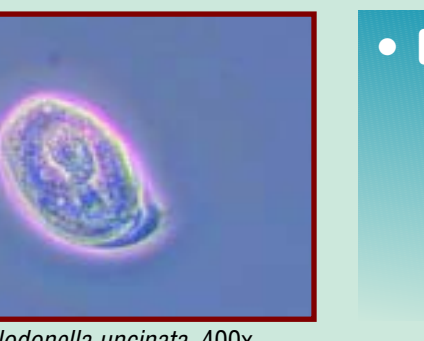
Gastronauta, 200x.



Trithymostoma sp., 1000x. Tinción Fdez-Galiano.



Trochilla minuta, 400x.



Chilonella uncinata, 400x.



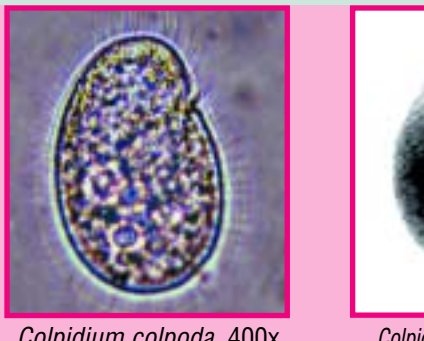
• HETEROTRICO



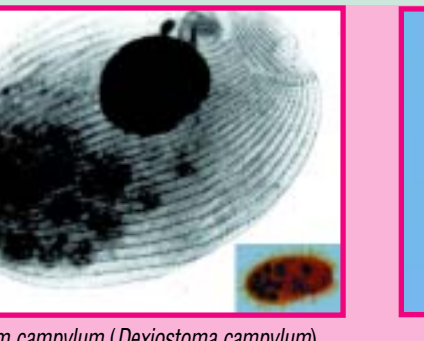
Stentor coeruleus, 200x.

### CILIADOS NADADORES NO ASOCIADOS AL FLOCULO

#### • OLIGOHIMENÓFOROS TETRAHYMENINOS



Colpidium colpoda, 400x.



Colpidium campylum (Dactyostoma campylum), 1000x. Tinción Fdez-Galiano. Detalle C. colpoda.



Glaucoma scintillans, 400x. Tinción Fdez-Galiano.



Glaucoma sp., 630x.



Glaucoma sp., 1000x. Tinción Fdez-Galiano.



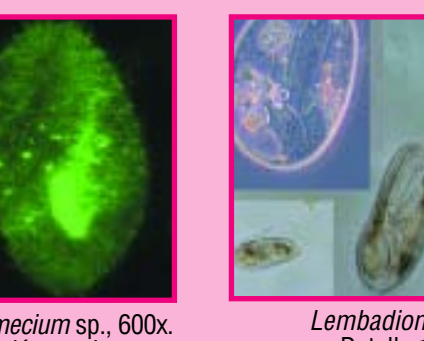
Paramecium aurelia, 400x.



Paramecium bursaria, 100x.



Paramecium caudatum, 400x.



Paramecium sp., 600x. Tinción con Ftúx.



Lemnibacillus lucens, 400x. Detalle 100 y 200x.

